

Lewes District

Community Safety Plan

April 2008 to April 2011



Owners:	Lewes District Crime Reduction Partnership	
Marking:	UNRESTRICTED	
Covering Period	Data from October 2006 to September 2007 Covering Projected Problems from January 2008 to June 2007.	
Authors:	Carina Hinkley Ioni Sullivan	Reference:

CONTENTS

1) Introduction	p. 3
2) Executive Summary	p.3-4
3) Contextual Information	p.5-10
3.1 About Lewes District	
3.2 The Lewes District Crime Reduction Partnership	
3.3 Structure of the Crime Reduction Partnership	
4) The Crime Reduction Strategy 2005-8	p.10-11
5) Priorities for the District 2008-2011	p.11-12
5.0 Methodology for establishing priorities	
5.1. PRIORITY 1: Anti- Social Behaviour	p.12-13
5.1.1 Themes and aims	
5.1.2 Partnership Objectives 2008-11	
5.2 PRIORITY 2: Vehicle Crime and Safety	p.14
5.2.2 Themes and aims	
5.2.3 Partnership objectives 2008-11	
5.3 PRIORITY 3: Community Engagement	p.14-15
5.3.1 Themes and aims	
5.3.2 Partnership objectives 2008-11	
6) Timescale for review of the Community Safety Plan	p.15
7) The Community Safety Team and Key Contacts for the Crime Reduction Partnership	p.16

1 Introduction

This Community Safety Plan covers the period from April 2008 to March 2011 and sets out the priorities for the Partnership and its vision for creating safer communities for residents of the Lewes District.

The creation of this plan follows guidelines set out by the Home Office in 2007, which require Partnerships to set out 3-yearly plans refreshed each year detailing the Partnership's aims and actions. Prior to this year, the Partnership carried out 3-yearly audits of Crime and Disorder and set out 3-year Strategies for tackling the issues identified. This current Community Safety Plan builds on the significant work of the three previous strategies and sets out our priorities and the mechanisms through which we will address them.

This plan builds on the work of the Strategic Intelligence Assessment of crime and disorder data for the District carried out in December 2007. The assessment included a variety of crime and incident data from various sources, as well as the results of community consultation. The period analysed was December 2006- June 2007, and the exercise allowed us to form a good picture of the levels of crime, disorder, anti-social behaviours and substance misuse in the District. Where gaps in this data have been identified, we will address these during the lifetime of this plan and take any new data into consideration in its yearly 'refresh'. We are, however, confident that this plan addresses the most important issues for the agencies involved in the Crime Reduction Partnership and, most importantly, for the residents of the Lewes District.

2. Executive Summary

Lewes District is a mixed urban and rural territory covering a large geographical area. The district is also mixed socially, with pockets of significant deprivation in towns as well as in the rural area often being masked by the generally affluent image of the district.

The Crime Reduction Partnership brings together statutory and voluntary organisations in the District to tackle crime and antisocial behaviour. It has been running since 2001 and has produced 2 previous Crime Reduction Strategies. Some key outcomes of the 2005-8 Strategy include:

- Reductions in injury related violent crime related to the night time economy
- Reductions in burglary and car crime
- Support for victims of hate crime and domestic violence
- Improved communication and consultation
- Establishment of group to target Prolific and Priority Offenders
- Awareness raising and improved referrals around substance misuse
- Provision of targeted youth work and improved youth provision

- Work with Local Action Teams and Joint Action Group to respond to localised issues

The Partnership analyses trends in crime data and consults with the community in order to set priorities for the District. Government funding is allocated by the Partnership to projects and services that will best achieve these priorities. The Partnership has set the following three priorities for the lifetime of this plan:

1) Alcohol Related Crime and Antisocial Behaviour

Whilst levels of serious crime are relatively low in the District, low level crime and nuisance behaviour are a key concern for residents. Misuse of alcohol is often a driver of these types of crime. A variety of prevention and enforcement measures are planned in the following areas: domestic violence, criminal damage, licensing and young people. Education about the risks of unsafe drinking and referrals to support services will also be key to success in this area.

2) Vehicle Crime and Safety

Antisocial use of cars and speeding is an increasing concern for local people and agencies in the District. There has also been a recent increase in theft of and from vehicles. Interventions will include tackling these thefts through prevention, education and enforcement as well as taking measures to reduce incidents of speeding, drink driving and other antisocial vehicle use.

3) Information Management

In order to best meet the needs of residents, the Partnership must have access to up to date, relevant data on crime and disorder patterns from a wide range of sources. It must also consult with its communities, including hard to reach or hard to hear groups, and enable local people to engage with its work.

At the time of writing, there are a number of exercises underway to set targets which will have relevance to the work of the CRP, notably the Local Area Agreement negotiations and targets for Sussex Police. In view of this, targets have not been set around the priority areas but will be developed in action plans by the groups set up to manage work in the 3 priority areas. These will be included in the review of the plan in October 2008.

3. Contextual information

3.1 About Lewes District

Lewes District extends inland from the Channel coast over the South Downs and into the Sussex Weald covering 292 square kilometres. Over one third of the area forms part of the Sussex Downs Area of Outstanding Natural Beauty and around half is proposed to be included in the South Downs National Park.

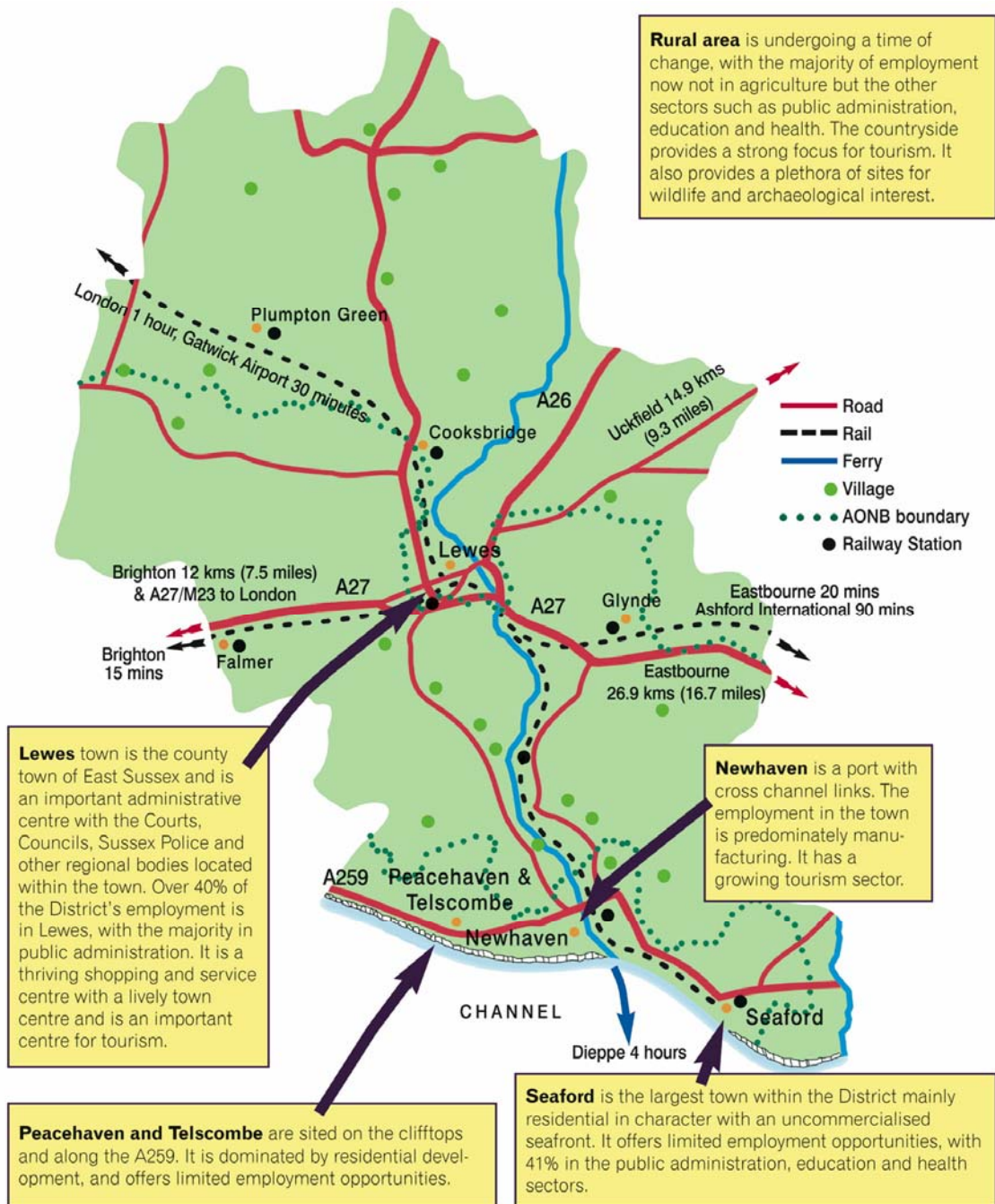
Most of the District's 93,900 population live in the four main urban areas (Seaford, Newhaven, Peacehaven & Telscombe and Lewes). Around 14% live in the many villages, hamlets or isolated settlements. There are just over 42,000 households in the District, 31% are single person households and 24% are households with children. Around 88% of the housing stock is privately owned.

Lewes District is a generally prosperous and affluent area. However pockets of deprivation and social exclusion exist, particularly in parts of the coastal towns and some rural areas. Parts of Newhaven and Peacehaven are amongst the top 10% most deprived areas in the South East. 9% of over 60s and 10.7% of children live in families that are income deprived. Newhaven has the highest levels of deprivation amongst children and young people and is ranked among the 20% most deprived in England.

The 2001 Census shows an increase in population of 16.73% since 1981, wholly due to inward migration. Regional housing policies project the population to reach 98,636 by 2026. We have an ageing population, above national average in every age band over 50, and below average in all age bands under 40. There are still over 19,000 people in the under-18 age group. Women make up 52.2% of the population and 22.5% of people are above retirement age. Black and minority ethnic groups make up 2.1% of the population. Bengalis and Chinese are the main ethnic groups in the District. Around 13% of the economically active population is disabled.

Lewes District is 2-tier local authority area with Lewes District Council being up one of the 5 Local Authorities that make up East Sussex.

Map of the Lewes District



3.2 The Lewes District Crime Reduction Partnership (CRP)

Crime and Disorder Reduction Partnerships were formed as a response to the Crime and Disorder Act 1998, which recognised that the Police alone cannot be responsible for reducing crime. It is only by a wide range of agencies working together to develop and implement local solutions to local problems that we can bring about lasting reductions in crime. The Lewes CRP consists of:

- Sussex Police
- Lewes District Council
- East Sussex County Council
- Sussex Police Authority
- East Sussex Fire and Rescue Service
- Primary Care Trusts

The membership of the CRP is far wider than its statutory partners, including many voluntary and community organisations operating in the District. In particular, chairs of the Area Partnership (geographically based subgroups of the Local Strategic Partnership) are members of the CRP.

Government funding is currently allocated via the mechanism of Local Area Agreements, agreed between central government and East Sussex County Council. The CRP is therefore responsible for representing Crime and Disorder issues in the District in these negotiations.

“Crime and especially Anti-Social Behaviour features now higher than ever on the agenda of local residents. In the most recent survey of residents’ satisfaction conducted by the Council, respondents told us that low levels of crime are the most important factor in making an area a good place to live.

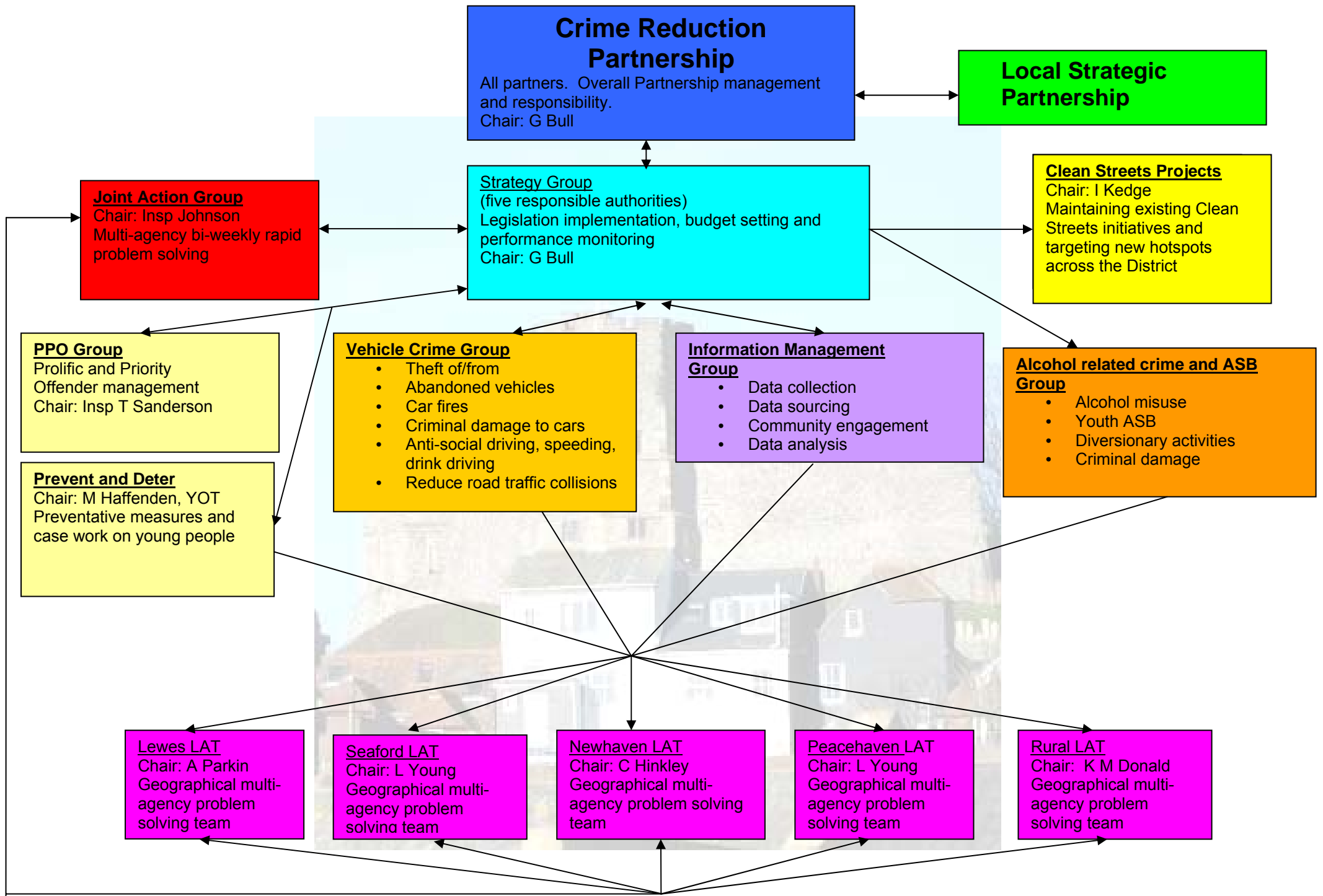
“The local Crime Reduction Partnership has been working to reduce crime for seven years and has a mission to make the communities within Lewes District a safer place to live and work and to improve the quality of life for its residents and all who visit the district.”

- Professor Gordon Bull, Chair of Lewes District Crime Reduction Partnership

3.3 The structure of the Lewes District Crime Reduction Partnership

In delivering community safety for the District, the CRP has set up a number of sub-groups to enable it to meet the aims of this plan. The CRP also sits within a wider framework of partnerships, most notably the District-wide Local Strategic Partnership of which the CRP is an independent sub-group.

An illustration of the structure is shown below.



The Strategy Group is responsible for implementing national policy and is made up of the 5 Responsible Authorities (Lewes DC, Sussex Police, Sussex Police Authority, East Sussex Fire and Rescue Service, Sussex Downs and Weald PCT). This group forms part of and reports to the wider Crime Reduction Partnership, where the 5 responsible authorities are joined by representatives from the LSP's Area Partnerships, chairs of LATs, and representatives from other partner organisations.

The thematic subgroups of the CRP report to the Strategy group and have been set up to tackle priority areas of work.

The JAG is a bi-weekly interagency problem-solving group, which provides rapid solutions to emerging issues, identified through data analysis (the group receives CADDIE reports on crime and disorder statistics each meeting) and partners' input. The group also have a mobile CCTV at their disposal, which is tasked by the JAG group. Membership of the group includes Police, Youth Development Service, the Clean and Green Team, Housing Services and the Community Safety Team, East Sussex Fire and Rescue Service and Trading Standards. Members can raise issues they feel would be best dealt with by using a partnership approach.

The PPO group (short for Prolific and Other Priority Offenders) is chaired by Sussex Police with the aim of targeting the most prolific offenders in the District who, whilst small in number, commit a disproportionate amount of crime. The meetings are chaired by Sussex Police and taking place on a bi-monthly basis. The aim is to have a co-ordinated approach when it comes to dealing with prolific offenders.

The Prevent & Deter group is also a multi-agency forum, which undertakes case conferences on young people on the cusp of offending. The group meets every two months and a variety of agencies get involved when dealing with a young person's case. As the group also has funding at its disposal, they are also funding a range of diversionary activities.

The Clean Streets project is chaired by the Head of Environmental Health. This group targets resources on particular areas in the District under the banner of "Clean Streets", to 'blitz' environmental crime issues. In the longer term, each 'blitz' area looks to put mechanism in place to make these actions sustainable and to maintain improvements.

The Alcohol related crime and ASB Group is being formed in response to the identified priorities of this current plan 2008-11. The group will be tasked with drawing up action plans to tackle the issues identified through the Strategic Intelligence Assessment.

The Vehicle Crime Group is likewise being formed as a response to the emerging priorities identified around vehicle crime and safety. It will also draw up action plans and targets in this area.

The Information Management Group will be chaired by the Policy and Community Engagement Officer, with 2 main aims; firstly to establish and share reliable sources of data, especially where the CRP has identified gaps (such as A&E data). Secondly it will be responsible for coordinating consultation and communication work for the CRP, including statutory duties such as Face the People sessions and looking at ways to enhance community engagement with the CRP's work.

There are also five geographically based **Local Action Teams (LATS)**, which are essential in delivering the CRP's agenda at a local level and in engaging the community with our work. Local Action Teams consist of the Anti-Social Behaviour Co-ordinator, the Local Neighbourhood Policing Team, LDC Housing, Local Councillors, local youth workers and various other members of local voluntary organisations. LATs respond to issues in their locality. For contacts for the Local Action Teams, please see page XX.

4. The Crime Reduction Strategy 2005-8

The previous Crime and Disorder Reduction Strategy was published in April 2005 and outlines priorities and actions until 2008. For this period, the CRP chose the following priorities:

- | | | |
|------------------------------|---|--------------------|
| ■ Public Place Violent Crime | ■ Acquisitive Crime | ■ Hate Crime |
| ■ Perception of Crime | ■ Prolific and Other Priority Offenders | ■ Substance Misuse |
| ■ Anti-Social-Behaviour | ■ Marketing and Public Relations | |

Headline actions and outcomes from the 2005-8 Strategy:

Public Place Violent Crime

- High visibility additional patrols
- Development of pubwatch and enforcement of licensing regulations
- Diversionary activities and effective use of sanctions for young people
- Campaigns targeting criminal damage
- Wounding and Weekend evening injury related PPVC down by 30% since 2003/04
- Young people as victims of injury related PPVC down by 42% since 2003/04

Acquisitive Crime

- Crime prevention advice around burglary and vehicle crime
- Domestic Burglary down by 52% since 2003/4
- Theft of and from a vehicle down by 39% and 29% since 2003/04

Hate Crime

- Support of Domestic Violence and Hate Crime Services
- Reporting of DV increased by 35% since 2005, repeat incidents at 20%
- Race Incident reporting has decreased with repeat incidents at 2.2%

Perception of Crime

- Support for LATs in engaging communities through devolved budgets
- Street consultations, community intelligence questionnaires, regular newsletters and improved local press coverage

Prolific and Priority Offenders

- PPO problem solving group established and county-wide standards adopted
- Targeted casework on young people at risk of offending through Prevent and Deter Group

Substance Misuse

- Focus on tackling alcohol misuse through awareness raising programmes run in schools and other young persons' meeting places, e.g. youth clubs
- Acceptable Behaviour Agreement project initiated to refer young persons misusing alcohol to the under-19s substance misuse service with 12 referrals in first 4 months of scheme

Antisocial Behaviour

- Funding of YDS outreach and detached work in Newhaven and Lewes
- Targeting of enviro-crime and improving clean up processes
- Action taken against LDC tenants causing ASB
- Identifying and responding to localised hotspots through JAG and LATs
- Criminal damage reduced by 4% from 2006 to 2007
- Signal ASB incidents increased by 2% from 2006-2007

5. Priorities for the District 2008-2011

5.0 Methodology for establishing priorities

In line with national guidance, the CRP carried out a Strategic Intelligence Assessment in December 2007. This took into account a wide range of statistical information as well as feedback from action groups and local residents. This included:

- Sussex Police data
- CADDIE data (including Fire and Rescue Service data, crime and other incident data)
- Results of the 2007 Crime Reduction Survey
- Results of the 2007 Lewes District User Satisfaction Survey
- Information gathered from Local Action Teams
- Feedback from Action Groups

The CRP also works within wider strategic frameworks, most notably the Local Area Agreements negotiated between central government and the County and District Local Strategic Partnerships. The partnership took account of the priorities and targets likely to be set in the LAA, although this

process was still ongoing at the time of the Strategic Assessment. The Partnership also took account of the Public Service Agreement aims (set by National Government) in the area of Community Safety, which are:

- PSA 23: Make communities safer
- PSA 25: Reduce the harm caused by alcohol and drugs

The CRP's Strategy group met a number of times to analyse the available data and to decide on strategic priorities for the period 2008-11. These priorities reflect high-risk crimes both in terms of volume and impact as well as taking into consideration the issues of most concern to local residents. As a result, the following 3 priorities were chosen:

- Alcohol related crime and Anti-Social Behaviour
- Vehicle Crime and Safety
- Community Engagement and Information Management

5.1. PRIORITY 1: Alcohol Related crime and Anti- Social Behaviour

5.1.1 Partnership aims

Whilst the District remains a generally safe place to live and work, with lower than average levels of recorded crime, concern around low-level crime and anti-social behaviour is a priority for the Partnership and for local people. The CRP has acknowledged that alcohol misuse is a driving factor in many areas of crime in the District and has therefore decided to make addressing this issue an explicit priority. The two key areas highlighted through the intelligence process are youth related alcohol misuse and crime and disorder related to the night time economy. The CRP will work on targeting particular hotspots and locations for these types of crime.

For the period of this Community Safety Plan, the CRP has decided to focus on the following aims:

- To reduce incidents of alcohol related Criminal Damage
- To encourage reporting of Domestic Violence
- To reduce repeat incidents of Domestic Violence
- To prevent ASB through diversionary activities
- To investigate breaches of license
- To reduce underage purchase of alcohol and purchasing by over-18s for under 18s.
- To educate residents on the dangers of alcohol misuse
- To increase referrals to the Under 19's substance misuse service
- To use effective and appropriate sanctions against young people committing Anti-Social Behaviour
- To increase preventative measures in relation to Criminal Damage

5.1.2 Partnership Objectives for 2008-2011

- All five Local Action Teams will continue to include ASB and especially alcohol related ASB within their Action Plans, and will procure services at local level to deal with emerging problems.
- To continue to fund Operation Marble - extra high visibility and plain-clothes police patrols, which have had considerable success in recent years in reducing alcohol related crime and disorder, especially at weekends and in the evenings
- To work with partners to carry out test purchase operations for alcohol
- Continue to work closely with the Youth Development Service to ensure diversionary activities are provided where needed in the District.
- The Joint Action Groups (interagency rapid problem solving group) will continue to meet every two weeks to address current ASB issues, identified either through CADDIE or within the group, which has enabled quick solutions and created valuable links. The JAG will link in closely with the Alcohol Related Crime and Antisocial Behaviour action group and will help set and deliver its targets and action plans.
- The CRP will continue to fund the Domestic Violence specialist service CRI, who support victims of Domestic violence in the District.
- The CRP will continue to develop the use of Acceptable Behaviour Agreements (ABAs), which will be mainly used to combat underage drinking, and within this project ensure that more young people will be referred to the Under 19s substance misuse team.
- Focus on breach of license and deal with the licensee accordingly, as well as Effective operation of the Pubwatch scheme throughout the District, including Radiolink and banning orders.
- Support campaigns to raise awareness the dangers of alcohol to parents or other adults who supply alcohol to underage young people in conjunction with the County-wide Young Persons Safety and Alcohol Resources Group.
- ASB hotspots will be targeted using the CRP mobile CCTV system, which will be deployed via the Joint Action Group.
- The CRP will work with young people to reduce incidents of deliberate fire-setting as well as identify long-term arson reduction strategies in partnership with all responsible agencies.

5.2 PRIORITY 2: Vehicle Crime and Safety

5.2.1 Partnership aims

Vehicle Crime and Safety has been identified through the Strategic Intelligence Assessment as a new priority. Vehicle crime, especially Criminal Damage to Vehicles has emerged as a recent crime trend needing targeted resources, and dangerous or antisocial driving has been identified as a prime concern for local residents.

The CRP's aims will be:

- To reduce criminal damage to vehicles
- To reduce theft of vehicles
- To reduce theft from vehicles
- To reduce abandoned vehicles
- To reduce car fires
- To reduce road traffic collision – seriously injured or fatal collisions, especially with regard to the A27
- To reduce incidents of drink driving
- To reduce anti-social driving and speeding

5.2.2 Partnership objectives 2008-11

- All five Local Action Teams will focus on Criminal Damage to vehicles in their Action plan as well as providing community intelligence to the CRP.
- The CRP will make use of its devices such as the mobile CCTV system and other technology to combat theft of and theft from vehicles.
- The CRP will promote road Safety campaigns for the A 27
- The CRP will use publicity campaigns to target local hotspots of vehicle crime.
- The Clean Green Team will undertake “blitz” operations in conjunction with the DVLA regarding abandoned vehicles in the District.
- The CRP will develop a range of measures to address anti-social driving such as the use of speed guns, Speed Indicator devices, and in case of anti-social use of motorbikes, install additional bikestoppers

5.3 PRIORITY 3: Information management and Community Engagement

5.3.1 Partnership aims

It is essential that the Partnership has good access to timely shared data in order to ensure that resources are allocated to those crime areas which are most prevalent and of most impact to our residents. It is also essential that local people's views are sought to complement the use of statistical data when setting our work priorities. We will seek to respond to local people's concerns and, crucially, to engage all sections of our communities enabling them to

become more involved in our drive to keep crime and disorder levels low in the District. Our key aims in this area will be:

- To ensure that partners provide timely data on crime and disorder related trends
- To use this data effectively to monitor progress and to tackle emerging issues
- To consult with our communities, particularly those considered 'hard to reach'
- To provide regular feedback to our communities on the CRP's work
- To enable residents to engage with the work of the CRP
- To tackle perceptions of crime and to work proactively with local media

5.3.2 Partnership objectives 2008-11

- To establish an Information Management group to coordinate information sharing and to lead on community consultation and communication
- To review information sharing protocols and to review where there are gaps in the data currently available to the Partnership
- To implement statutory consultation mechanisms, including the Place Survey and Face the People sessions
- To work with local advocacy groups and other partners to ensure that minority groups are fairly represented in consultation work
- To support the work of the Local Action Teams in identifying community concerns and ways in which community groups can be supported in finding solutions to them
- To produce regular newsletters for Partners and the wider community to keep them informed of the work and progress of the partnership
- To improve relations with the local media and to increase positive reporting of crime and disorder issues
- To support the other action groups and LATs in targeting educational campaigns and other publicity materials, with particular regard to reducing fear of crime

6. Timescale for review of the Community Safety Plan

This plan is published in April 2008, and will be reviewed in October 2008. A full review will be undertaken in February 2009, as the Partnership is required to publish and updated plan in April 2009. This will include detailed targets and action plans for the priority areas. Due to the ongoing LAA target setting process, which will be finalised in the summer of 2008, the inclusion of targets in this current plan will be delayed until then.

Reviewing the plan will give the partnership the opportunity to monitor ongoing project and initiatives, and to adapt the plan and consequently the resourcing according to new or emerging priorities.

7) The Community Safety Team and Crime Reduction Partnership Key Contacts

The Community Safety Team is a partnership resource, but it based at Lewes District Council. The team consists of:

Carina Hinkley
Co-ordinator of the Crime Reduction Partnership
Carina.hinkley@lewes.gov.uk

Tel: 01273 484 336

Ioni Sullivan
CRP Policy and Community Engagement Officer
loni.sullivan@lewes.gov.uk

Tel: 01273 484 337

Louisa Young
Anti-Social Behaviour Co-ordinator, Coastal Areas
Louisa.young@lewes.gov.uk

Tel: 01273 484 394

Alistair Parkin
Anti-Social Behaviour Co-ordinator, Lewes Town and Rural areas
Alistair.parkin@lewes.gov.uk

Tel: 01273 484339

The Chair of the Crime Reduction Partnership is Professor Gordon Bull:

Gordon Bull
c/o Community Safety Team
PO Box 167
Lewes District Council BN7 9EZ

gbull@btinternet.com